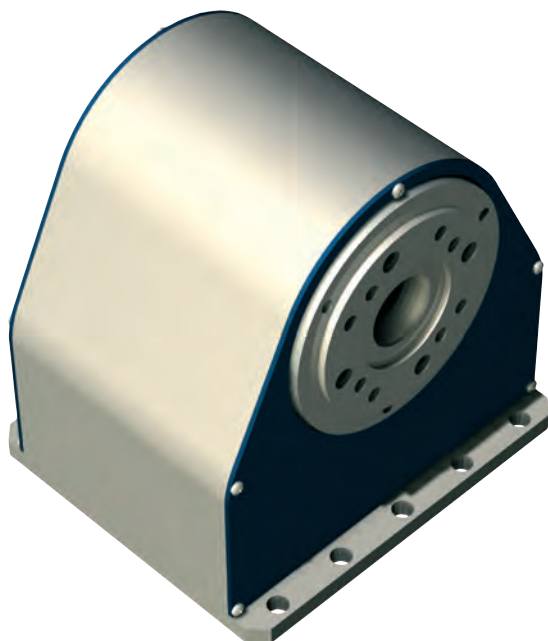


# Rotary unit

## ZD 30



### Features

- Low play toothed belt drive with Stepper motor
- Reduction 1 : 30
- Shaft with  $\varnothing$  15 mm boring
- Housing flange with inner cone SK 20
- Weight: 2,9 kg

For pin assignment see page 2-112  
For transport loads, see page 2-113

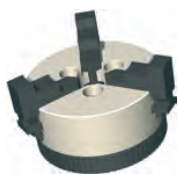
### Options:

- CNC controller via Sub D

### Ordering data

ZD 30 rotary unit  
Part no.: **261100 0000**

### Accessories



**Chuck assembly**  
3-jaw chuck  $\varnothing$  65  
Part no.: **269060 2065\***



**Chuck assembly**  
3-jaw chuck  $\varnothing$  80  
Part no.: **269063 3080\***



**Collet holder**  
Clamping ring housing SK 20  
for tools  $\varnothing$  3 - 13 mm, with  
installation ring  
Part no.: **239172 0020**

Clamping rings are on  
page 5-32.



**Tailstock unit RE-ZD30**  
200 mm Part no.: **269 100 1060** L 331  
300 mm Part no.: **269 100 1070** L 431  
400 mm Part no.: **269 100 1080** L 531  
500 mm Part no.: **269 100 1090** L 631

\* including flange

# Rotary unit

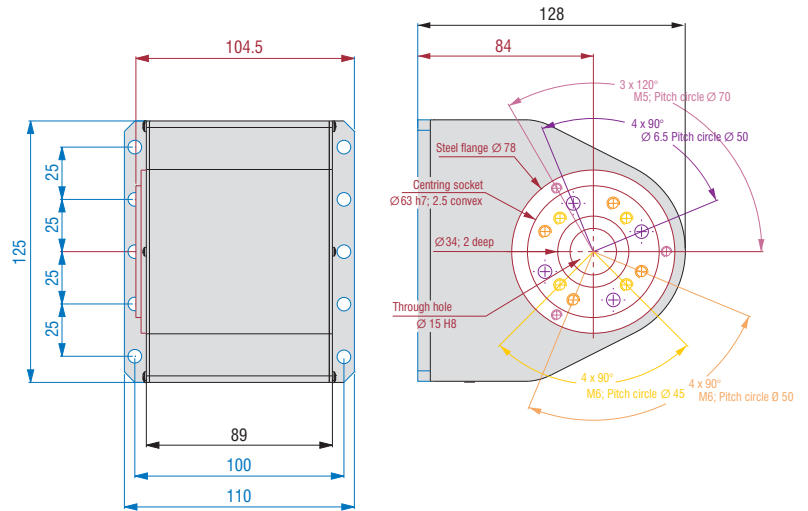
# ZD 30

## Technical specification

		stepper motor MS 045 HT *
Reduction ratio		0.0625
Output speed	[1/min]	0 - 40
Operating torque (0 - 1600 Hz)	[Nm]	12
Rated holding torque (static load)	[Nm]	20
Min. step (positional accuracy)	[arcmin]	2.5
Weight	[kg]	2.9

\* Values for half-step operation

## Dimensioned drawings



## Tailstock unit RE-ZD30

