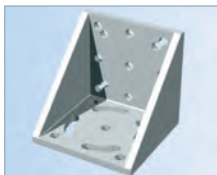


Accessories

LEZ 1



Angle bracket

- for LEZ 1

Part no.: **209110 0010**



20/30 coupling

- for LEZ 1
- 1 VE = 1 coupling

Part no.: **218001 5081**

Shaft slides 1/70

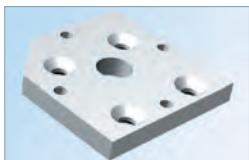
- L 96 x W 72 x H 28.5mm
- Clamping surface plane milled, T-slide thread M6
- Central greasing option, adjustable for no-play
- Weight: 0.35 kg
- Option: stainless steel version

Part no.: 223 100 0070
stainless steel: **223 101 0070**

Transmission shaft

Length 1 m
Part no.: **227008 1000**

LEZ 2



Motor fixing plate

- for LEZ 2
- incl. fixing material
- for direct drive see page C78 et seq.

Part no.: **232199 0004**



Coupling for Transmission shaft

- for LEZ 2
- 1 VE = 2 unit couplings

Part no.: **218050 0002**

Transmission shaft \varnothing 25 mm

Length 1 m
Part no.: **219001 0125**

Length 2 m
Part no.: **219001 0225**

Stationary bearing for transmission shaft

VE 1 unit
Part no.: **896202 5562**

LEZ 3



Coupling for transmission shaft

- for LEZ 3
- 1 VE = 2 unit couplings

Part no.: **218050 0002**

Transmission shaft \varnothing 25 mm

Length 1 m
Part no.: **219001 0125**

Length 2 m
Part no.: **219001 0225**

Stationary bearing for transmission shaft

VE 1 unit
Part no.: **896202 5562**

LEZ 9



30/40 coupling

- for LEZ 9
- 1 VE = 1 coupling

Part no.: **218002 8081**

Shaft slides WS 11/70

- L 96 x W 96 x H 32 mm
- Clamping surface plane milled, T-slide thread M6
- Central greasing option, adjustable for zero play
- Weight: 0.4 kg
- Option: stainless steel version

Part no.: **223111 0070**
Stainless steel: **223111 1070**

Transmission shaft

Length 1 m
Part no.: **227008 1000**