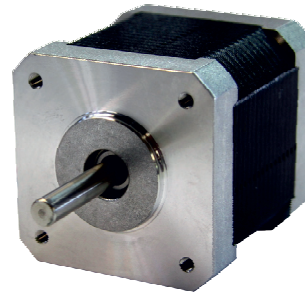


Characteristics

- Step angle 1.8°, low resolution thanks to Microstep operation
- Very high torque thanks to rare-earth magnets
- Optimised for use in positioning controls
- Optimum ratio of torque and size
- Small step angle error, non-cumulative



MS 048 HT-2

Description		MS 048 HT-2
Holding torque bipolar	Nm	0.56
Winding current per phase	A	1.7
Coil voltage per phase	V	2.72
Winding resistance per phase at 2,5°C	Ω	1.6 ± 10%
Winding inductivity per phase at 1 kHz	mH	3.2 ± 20%
Rotor inertia	kgcm²	0.082
Step angle / angle error	°/%	1.8 / 5
Connection cables		4
Weight	kg	0.34
Item-No.		470481

Maximum permissible radial load: 3,6 kg (at 10 mm)

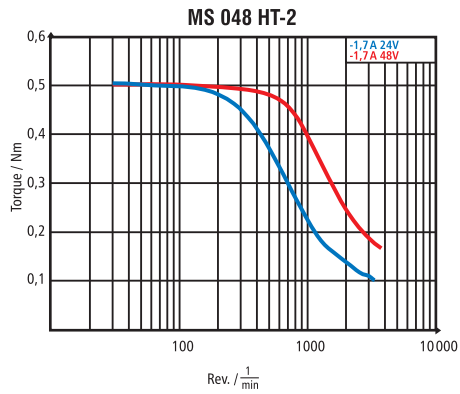
ISO-class: B (130°)

Protection class: IP 40

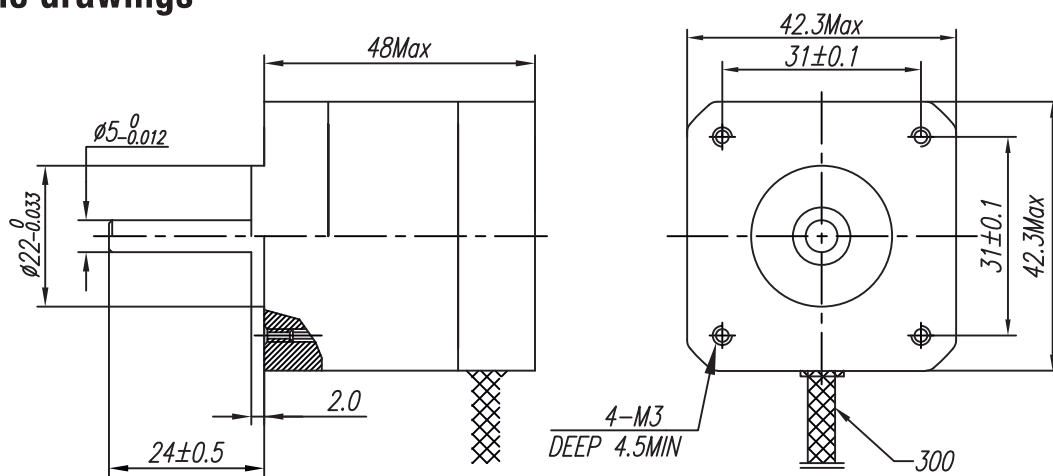
Ambient temperature: -10 °C ... +50 °C

Insulation resistance: 100 M / 500 V DC

Torque characteristics

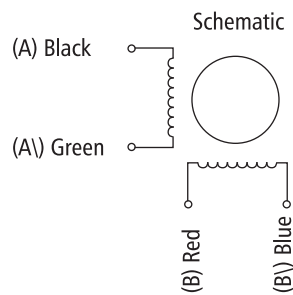


Scale drawings



Connection consignment

(External)		Motor	
PIN No.	Bipolar	Connection	Winding
1	A	Black	A
2	A\	Green	A\
3	B	Red	B
4	B\	Blue	B\



Control bipolar, full step
View on mounting side (flange)

Step	A	B	A\	B\		CCW
1	+	+	-	-		↑
2	-	+	+	-		
3	-	-	-	+		
4	+	-	-	+		